

Lingual Thyroid: An Ectopic Presentation at the Base of the Tongue

Rizqi Rifani^{1,2} and Dicky Levenus Tahapary³

¹Department of Internal Medicine, Faculty of Medicine, Universitas Indonesia - Cipto Mangunkusumo Hospital, Jakarta, Indonesia

²Division of Endocrinology, Metabolism and Diabetes, Department of Internal Medicine, Faculty of Medicine, Universitas Lambung Mangkurat – Ulin General Hospital, Banjarmasin, Indonesia

³Division of Endocrinology, Metabolism and Diabetes, Department of Internal Medicine, Faculty of Medicine, Universitas Indonesia - Cipto Mangunkusumo Hospital, Jakarta, Indonesia

Key words: thyroid gland, ectopic, lingual thyroid, scintigraphy

Lingual thyroid is the most common form of thyroid ectopia, resulting from failure of normal caudal migration of the thyroid anlage during embryogenesis.¹ Diagnosis relies on cross-sectional imaging to define anatomy and radionuclide scintigraphy as the gold standard to verify functional thyroid tissue and exclude normally located gland.²

The images depict the clinical, radiological, and scintigraphic findings of a 27-year-old woman with ectopic

lingual thyroid. Clinical photograph showed a smooth, reddish, round mass at the tongue base (Figure 1). Contrast-enhanced CT in sagittal and axial views demonstrated an enhancing lesion at the posterior tongue with the absence of orthotopic thyroid tissue in the pretracheal area (Figure 2). Tc-99m pertechnetate scintigraphy showed focal tracer uptake in the lingual region (Figure 3), confirming the diagnosis of ectopic thyroid tissue.

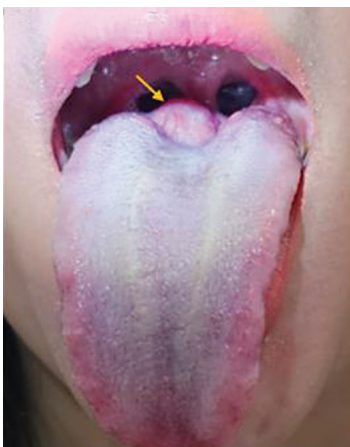


Figure 1. Examination of the tongue revealed a small, smooth, reddish mass located at the base of the tongue.

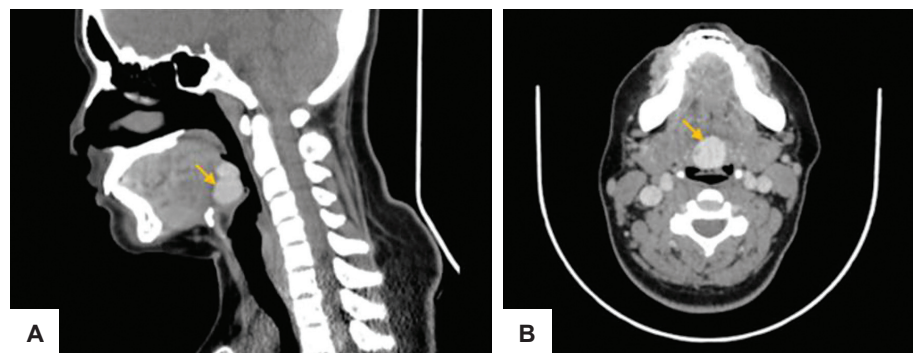


Figure 2. Contrast-enhanced multislice computed tomography (MSCT) of the neck demonstrated an ectopic thyroid gland at the base of the posterior tongue, shown in (A) sagittal and (B) axial views.

eISSN 2308-118x (Online)

Printed in the Philippines

Copyright © 2026 by Rifani and Tahapary.

Received: July 16, 2025. Accepted: September 7, 2025.

Published online first: April 26, 2026.

<https://doi.org/10.15605/jafes.041.01.6209>

Corresponding author: Rizqi Rifani, MD

Division of Endocrinology, Metabolism and Diabetes,

Department of Internal Medicine, Faculty of Medicine,

Universitas Indonesia - Cipto Mangunkusumo Hospital

Diponegoro Street No. 71, Jakarta Pusat, Indonesia, 10430

Tel. No.: (+62) 021-3907703

E-mail: rizqi.rifani@gmail.com

ORCID: <https://orcid.org/0009-0009-5289-2657>

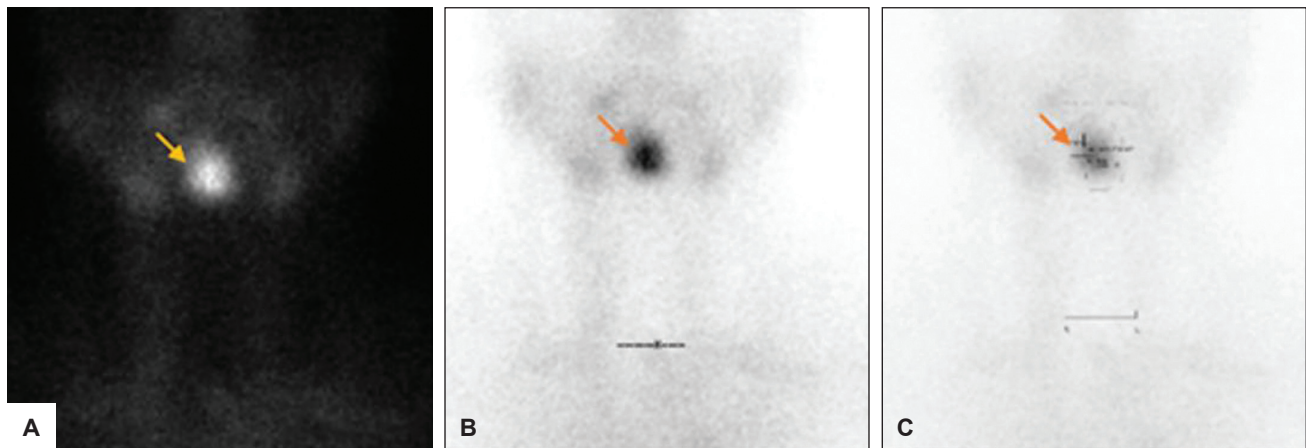


Figure 3. Thyroid scan with technetium-99m showing a round, focal area of radiotracer uptake in the lingual projection. **(A)** Focal area of increased radiotracer uptake in the midline at the base of the tongue (*orange arrow*). **(B)** Focal radiotracer uptake in the lingual region (*orange arrow*), suggestive of a lingual thyroid. **(C)** Confirmatory view demonstrating localized uptake at the base of the tongue (*orange arrow*).

Ethical Consideration

Patient consent forms were obtained before manuscript submission.

Statement of Authorship

Both authors certified fulfillment of ICMJE authorship criteria.

CRedit Author Statement

RR: Conceptualization, Data curation, Visualization, Writing – original draft preparation, Writing – review and editing. **DT:** Conceptualization, Supervision, Writing – review and editing.

Data Availability Statement

No datasets were generated or analyzed for this study.

Author Disclosure

Both authors declared no conflict of interest.

Funding Source

None.

References

1. Anand SS, Sood V, Kumar PG, Suryanarayna KM, Kotwal N. Lingual thyroid. *Med J Armed Forces India.* 2006;62(2):184-5. PMID: 27407890 PMID: PMC4921966 DOI: 10.1016/S0377-1237(06)80068-7
2. Xu F, Shao Z, Yang G, et al. The value of scintigraphy, computed tomography, magnetic resonance imaging, and single-photon emission computed tomography/computed tomography for the diagnosis of ectopic thyroid in the head and neck: A STROBE-compliant retrospective study. *Medicine (Baltimore).* 2018;97(13):e0239. PMID: 29595677 PMID: PMC5895372 DOI: 10.1097/MD.00000000000010239.

Authors are required to accomplish, sign and submit scanned copies of the JAFES Author Form consisting of: (1) Authorship Certification, that authors contributed substantially to the work, that the manuscript has been read and approved by all authors, and that the requirements for authorship have been met by each author; (2) the Author Declaration, that the article represents original material that is not being considered for publication or has not been published or accepted for publication elsewhere, that the article does not infringe or violate any copyrights or intellectual property rights; that no references have been made to predatory/suspected predatory journals; and that use of artificial intelligence (AI) or AI-assisted technologies shall be declared to include the name of the AI tool or service used; (3) the Author Contribution Disclosure, which lists the specific contributions of authors; (4) the Author Publishing Agreement which retains author copyright, grants publishing and distribution rights to JAFES, and allows JAFES to apply and enforce an Attribution-Non-Commercial Creative Commons user license; and (5) the Conversion to Visual Abstracts (* optional for original articles only) to improve dissemination to practitioners and lay readers. Authors are also required to accomplish, sign, and submit the signed ICMJE form for Disclosure of Potential Conflicts of Interest. For original articles, authors are required to submit a scanned copy of the Ethics Review Approval of their research as well as registration in trial registries as appropriate. For manuscripts reporting data from studies involving animals, authors are required to submit a scanned copy of the Institutional Animal Care and Use Committee approval. For Case Reports or Series, and Images in Endocrinology, consent forms, are required for the publication of information about patients; otherwise, appropriate ethical clearance has been obtained from the institutional review board. Articles and any other material published in the JAFES represent the work of the author(s) and should not be construed to reflect the opinions of the Editors or the Publisher.